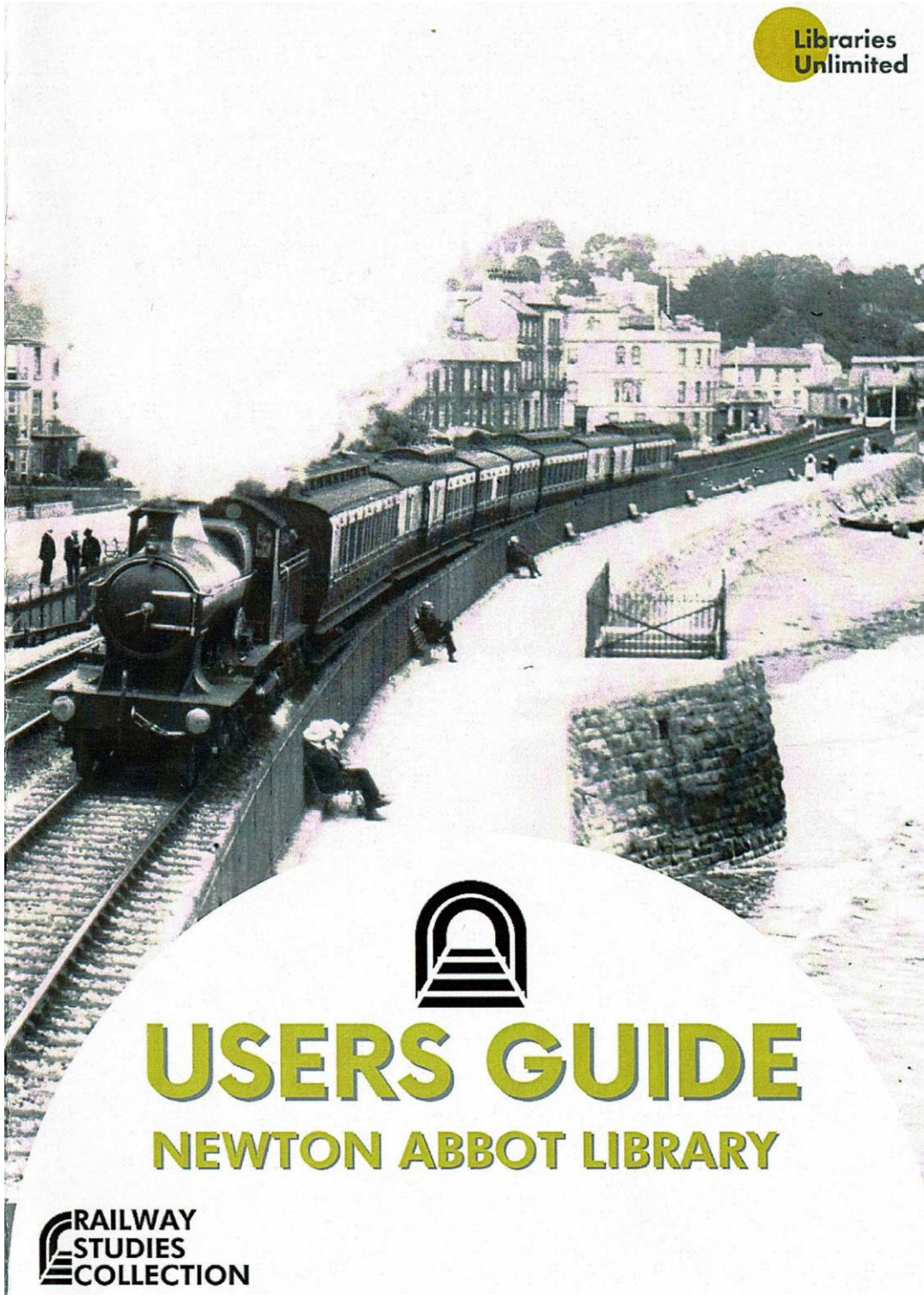


Libraries  
Unlimited



# USERS GUIDE

## NEWTON ABBOT LIBRARY

**RAILWAY  
STUDIES  
COLLECTION**

## OPENING HOURS:

Monday	9:00am - 6:00pm
Tuesday	9:00am - 6:00pm
Wednesday	9:00am - 6:00pm
Thursday	9:00am - 6:00pm
Friday	9:00am - 5:00pm
Saturday	9:00am - 4:00pm

## RAILWAY COLLECTION STAFFING TIMES:

Monday	10-12am & 2-5pm
Tuesday	10-12am & 2-5pm
Wednesday	2-5pm
Thursday	10-12am & 2-5pm
Friday	10-12am & 2-5pm
Saturday	Not Staffed

We are happy to retrieve items from our archives, but we ask that you call or e-mail ahead to make sure that they are available for you when you visit.



### **Arrangement of Bookstock**

The books in the Railway Studies Collection at Newton Abbot Library are arranged by a revised version of the OTTLEY classification scheme. This is the scheme used by the National Railway Museum Library and is based on 'A Bibliography of British History, in 2 volumes' compiled by George Ottley.

There are 18 main headings:-

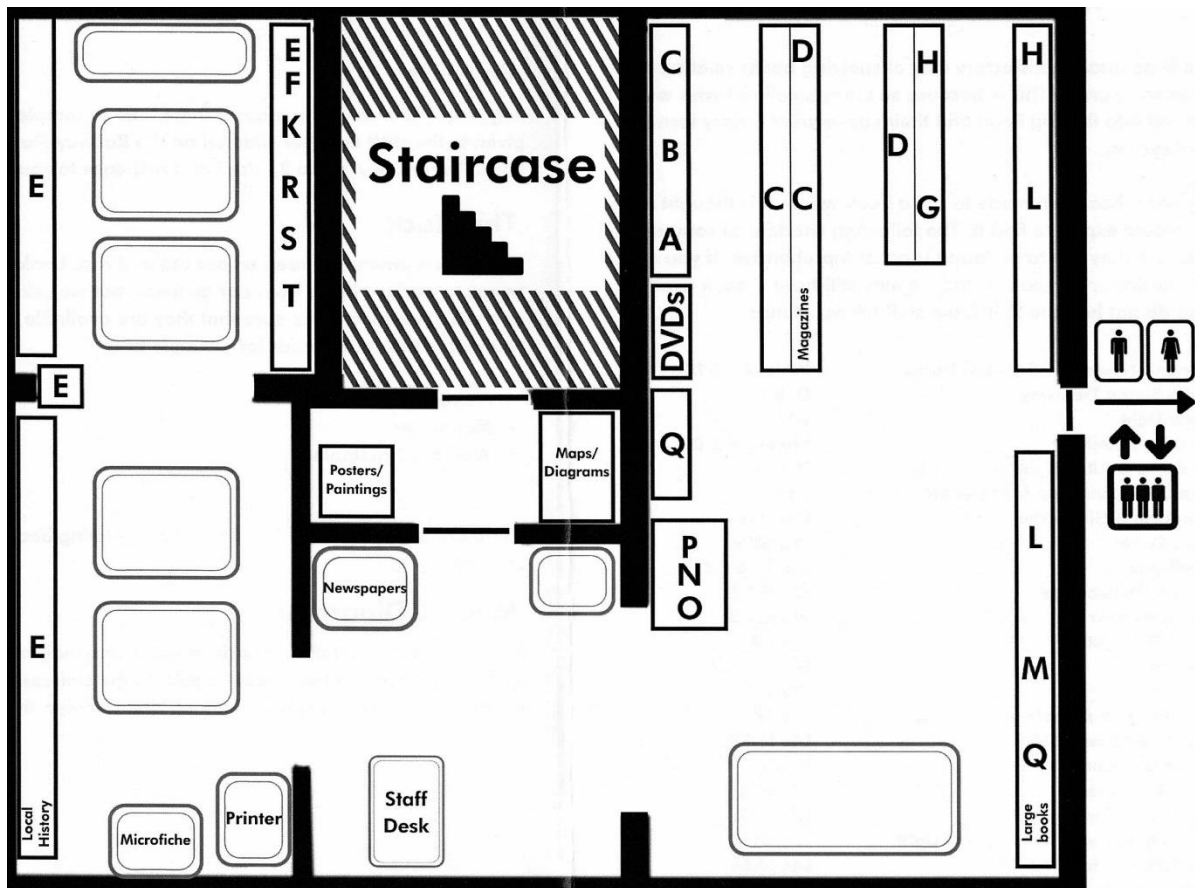
A      GENERAL HISTORY OF RAIL TRANSPORT

B	RAIL TRANSPORT AT PARTICULAR PERIODS
C	RAILWAY TRANSPORT IN SPECIFIC AREAS
D	SPECIALISED RAILWAYS
E	RAILWAY ENGINEERING
F	RAILWAY ADMINISTRATION
G	RAILWAY MANAGEMENT AND OPERATION
H	RAILWAY LIFE AND LABOUR
K	RAILWAYS AND THE NATION
L	RAILWAYS COMPANIES
M	HERALDRY AND LIVERY
N	THE RAILWAY IN ART, PAINTINGS, POSTCARDS AND POSTERS
O	THE RAILWAY IN LITERATURE
P	HUMOUR AND SATIRE
Q	APPRECIATION OF RAILWAYS - SOCIETIES AND RAIL TOURS
R	RESEARCH AND STUDY OF RAILWAYS
S	STATISTICS and REPORTS
T	ATLASES AND GAZETTEERS

Shelf Guides are to be found, based upon the above 18 main headings, expand the individual heading, e.g.

- E1 Biographies of railway civil/mechanical engineers
- E2 Civil engineering
- E3 Permanent Way

In addition to the bookstock, there is a collection of photographs cutting/information files and Society Journals, Transactions and periodicals separately filed in the Stack.



Plan of the first floor, Newton Abbot Library

## OTTLEY CLASSIFICATION OF THE RAILWAY STUDIES BOOKSTOCK B - RAIL TRANSPORT AT PARTICULAR PERIODS

- B1 Railway pre-history, i.e., plateways, wagon ways, canals
- B2 1800-1830 The transitional period (wagonway to passenger railway)
- B3 1840-1914 The railway age
- B4 1914-1919 Railways during world war one
- B5 1918-1923 Post war history ending with the 'Big Four' amalgamation of 1923
- B6 1921-1939 The 'Big Four' amalgamation of 1923 and railways during 1920s and 1930s
- B7 1939-1945 Railways during world war two
- B8 1945-1947 Post war recovery and railways during the final years of private ownership
- B9 1948 Nationalisation and the establishment of the British Transport Commission and British Railways
- B10 1948 -1994 Railways of the British Isles and British Railways
- B11 1994-1997 Privatisation of British Railways
- B12 1998 onwards

## C - RAILWAY TRANSPORT IN SPECIFIC AREAS

- C1 Trains of the British Isles (inc. cross border trains)
  - C1a Southern England
  - C1b Devon

C1c Cornwall  
C1d Somerset and Dorset  
C1e Bristol and Gloucestershire  
C1f Berkshire and Wiltshire a  
C1g Hampshire  
C1h London  
C1i Sussex  
C1j Surrey and Kent  
C1k Bedfordshire, Leicestershire and Northamptonshire  
C1l Buckinghamshire, Oxfordshire and Hertfordshire  
C1m Essex  
C1n Herefordshire and Worcestershire  
C1o Warwickshire, Shropshire and West Midlands  
C1p Staffordshire and Cheshire  
C1q Norfolk and Suffolk  
C1r Nottinghamshire and Derbyshire  
C1s Cambridgeshire and Lincolnshire  
C1t Merseyside and Manchester  
C1u Lancashire  
C1v Yorkshire  
C1w Cumbria  
C1x Tyne and Wear  
C1y Cleveland  
C1z Durham and Northumberland  
C2 Scotland  
C3 Wales  
C4 Ireland  
C5 Isle of Wight  
C6 Isle of Man  
C7 Channel Islands  
C8 Channel Tunnel

## **D - SPECIALISED RAILWAYS**

D1a Light railways  
D1b Tramways (inc. urban tramways)  
D2 Narrow Gauge railways  
D2l&b Lynton and Barnstaple Railway  
D3 Industrial, agricultural, dock, harbour and public utility systems  
D4 Electric and underground railways  
D5 Unusual forms of railways, e.g., elevated, cliff, hover-trains, monorail  
D6 Miniature railways; minimum gauge below 1ft. 3 inches

## **E- RAILWAY ENGINEERING**

E1 Biographies of railway civil/mechanical engineers  
E2 Civil engineering  
E3 Permanent Way  
E4 Electric railway including high speed rail and technology  
E5a Bridges, viaducts and tunnels

- E5b Architecture and Station Buildings - including drawings and plans
- E5c Railway design
- E6 Mechanical engineering
- E7 General works on locomotives - design and philosophy
- E7a Works and Boilers lists inc shed/company allocations
- E8a Steam locomotive evolution including diagrams and technical drawings
- E8b Steam Locomotive accessories
- E8c Steam Locomotive management and operation
- E8d Steam Locomotive performance in regular traffic and testing
- E8e Histories of specific British steam locomotive classes
- E8f Miscellaneous works on British locomotives
- E8g Overseas locomotives
- E8h Specialised, unorthodox and experimental locomotives
- E8j Motive power depots (AKA Engine Sheds) and yards (inc demolition/cutting)
- E8 GWR Steam Locomotives of the Great Western Railway
- E8 LMS Steam Locomotives of the London Midland Scottish Railway
- E8 LNER Steam Locomotives of the London & North Eastern Railway
- E8 SR Steam Locomotives of the Southern Railway
- E9 Electric locomotives and traction
- E10 Diesel, diesel-electric, gas-turbine and other self-generating types of locomotive and train including diagrams and technical drawings
- E10a Railcars and rail motors including diagrams and technical drawings
- E11 Rolling Stock
- E12 Carriages - design and history including plans, diagrams & drawings
- E13 Wagons - design and history including plans, diagrams & drawings
- E14 Brakes and passenger/driver communication
- E15 Safety engineering- signals, signalling, electric telegraph etc.
- E16 Miscellaneous railway equipment, e.g., snow ploughs
- E17 Locomotive, carriage and wagon manufacture and allocation, railway workshops and private builders

## **F - RAILWAY ADMINISTRATION**

- F0a Railway economics
- F0b Railways and the economy
- F0c Railway accountancy
- F1a Railway freight rates
- F1b Railway passenger fares, tolls, tickets, luggage labels
- F2a Inter-railways relations (inc. running powers)
- F2 Railway amalgamation and nationalisation (1921 & 1947 Acts)
- F3 The Railway Clearing House and British Railways Property Board

## **G - RAILWAY MANAGEMENT AND OPERATION**

- G Operation of railway services; (inc. mixed freight and passenger working timetables)
- G2 Freight railway services - handling, operation (inc. freight working timetables)
- G3 Passenger railway services (inc. passenger working timetables)
- G3a Special trains (inc. royal and funeral trains)
- G4 Railway road services and vehicles

G5a Railway maritime matters and ships  
G5b Railway air services  
G6 Railway publicity  
G7a Railway houses, hotels and catering  
G7b Railway shops and kiosks  
G8 Railway research (operational and maintenance)  
G9 Public relations

## **H - RAILWAY LIFE AND LABOUR**

H1 General Memoirs of railway men  
H1 GWR Memoirs of railway men relating to the GWR  
H1 LMS Memoirs of railway men relating to the LMS  
H1 LNER Memoirs of railway men relating to the LNER  
H1 SR Memoirs of railway men relating to the SR  
H2 Railway employee wages and trades union history  
H3 Staff training  
H4 Railway staff associations  
H5 Railway staff personal safety

## **K - RAILWAYS AND THE NATION**

K1 Railways and society  
K2 Railways and the passenger  
K3 Railway accidents, accident prevention and safety in transit  
K4 Railways and industry, trade and agriculture  
K5 Railways and the finance/investment  
K6 Railways and parliament/government (inc. government control and inspection, passenger duty, Acts of Parliament)  
K7 Railway law (inc. Railway police)  
K8 Railways and crime  
K9 Railways and the post office  
K10 Railways and national defence  
K11 Military railway  
K12 Railways and entertainment (inc jigsaws)

## **L - RAILWAY COMPANIES**

L1j ays Aylesbury Station  
L1j clc Cheshire Lines Committee  
L1j elr East London Railway  
L1j gwgc Great Western and Great Central Joint Railway  
L1j msja Manchester, South Junction and Altringham Railway  
L1j mgn Midland and Great Northern Joint Railway.  
L1j s&d Somerset and Dorset Railway  
L1k fur Furness Railway  
L1k met Metropolitan Railway  
L1k mswj Midland and South Western Junction Railway.  
L1k sto The Stonebridge Railway  
L2a GWR Great Western Railway.

L2b cor Cornwall Railway  
L2b esr East Somerset Railway  
L2b wes West Somerset Railway  
L3a LMS London, Midland and Scottish Railway.  
L3b lbr London and Birmingham Railway  
L3b lmr Liverpool and Manchester Railway  
L3b lyr Lancashire and Yorkshire Railway.  
L3b lnw London and North Western Railway.  
L3b mid Midland Railway.  
L3b nsr North Staffordshire Railway  
L4a LNER London and North Eastern Railway.  
L4b gcr Great Central Railway  
L4b ger Great Eastern Railway.  
L4b gnr Great Northern Railway.  
L4b h&b Hull and Barnsley Railway.  
L4b nbr North British Railway.  
L4b ner North Eastern Railway.  
L4b sndn Stockton and Darlington Railway  
L4b svr Stour Valley Railway  
L5a SR Southern Railway  
L5b lpsc London, Brighton and South Coast Railway.  
L5b lswr London and South Western Railway.  
L5b lbr Lynton and Barnstaple Railway  
L5b sec South Eastern Railway and London, Chatham and Dover Railway.

## **M - HERALDRY AND LIVERY**

M1 Railway heraldry and liveries  
M2 Locomotive names

## **N - THE RAILWAY IN ART, PAINTINGS, POSTCARDS AND POSTERS**

## **O - THE RAILWAY IN LITERATURE**

## **P - HUMOUR AND SATIRE**

## **Q - APPRECIATION OF RAILWAYS -SOCIETIES AND RAIL TOURS**

Q Royal and special trains  
Q1 Railway preservation - Exhibitions/museums/visits/re-opened lines/preservation societies/Heritage Railways  
Q1a Preserved locomotives  
Q2a Model Railways  
Q2b Model railway engineering, inc. live steam  
Q3 Railway Photography and cinematography

## **R - RESEARCH AND STUDY OF RAILWAYS**

R Research and source guides, bibliographies, dictionaries, encyclopaedias and magazines



R1 Industrial archaeology

## **S - STATISTICS and REPORTS**

## **T - ATLASES AND GAZETTEERS**

T1 Network maps

T1mid Network maps of the Midland Railway

T2 Track plans

## **INDEX TO INDIVIDUAL COMPANIES**

As so many small railways were absorbed into the 'Big Four' and their subsequent history forms part of that system, there is no satisfactory way of shelving books relating to specific companies. However, every effort has been made to put a book where it is thought most users would expect to find it.

The following index of companies is not comprehensive. If you do not see a particular company listed, we may still have a book available, please do not hesitate to ask the staff for assistance.

Preserved Lines e.g. Dart Valley are to be found at Q1

Alexandra (Newport & S Wales) Docks	Wales C3 & D3
Alford & Sutton Tramway	D1b
Ashover Light	D1a
Barry Dock & Railway	Wales C3 & D3
Basingstoke & Alton Light	D1a
Bideford, Westward Ho & Appledore	C1b
Birmingham & Gloucester	L3a LMS
Bishops Castle	L2a GWR
Bluebell Line	L5a SR & Q1
Bodmin & Wadebridge	L2a GWR
Brecon & Merthyr	Wales C3
Bristol & Gloucester	L3a LMS
Caledonian	Scotland C2
Cambrian	Wales C3
Canterbury & Whitstable	L5a SR
Cawood, Winslow & Selby	L4a LNER
Cheshire Line Committee	L1j dc
Chester & Holyhead	L3a LMS
Cleator & Workington Junction	L3a LMS
Cleobury Mortimer & Ditton Priors	L2a GWR
Colne Valley & Halstead	L4a LNER
Cornwall Railway	L2b cor
Corris	Wales C3
Cromford & High Peak	L1k & C1r
Davington Light	L1k & D1a
Didcot, Newbury & Southampton	L2a GVVVR
Docklands Light	D1a
Eastern Counties/Union	L4b ger

East Kent	D1a
Ffestiniog	Wales C3
Findhorn	Scotland C2
Fordell	Scotland C2
Furness	L1k fur
Glasgow & South Western	Scotland C2
Glyn Valley Tramway	Wales C3
Grand Junction	L3a LMS
Great Central	L4b gcr
Great Eastern	L4b ger
Great North of Scotland	L4a LNER
Great Northern	L4b gnr
Great Western	L2a GWR
Highland	Scotland C2
Hull & Barnsley	L4a LNER
Kent & East Sussex	C1i & Q1
Lancashire & Yorkshire	L3b lyr
Lancashire, Derbyshire & East Coast	L4b gcr
Lee Moor Tramway	D1b
Leek & Manifold	D1a
London & Birmingham	3b lbr
London & Blackwall	L4a LNER
London & Greenwich	L1k & C1h
London & North Eastern	L4b LNER
London & North Western	L3b lnw
London & South Western	L5b lswr
London, Brighton & South Coast	L5b lpsc
London, Chatham & Dover	L5b sec
London, Midland & Scottish	L3a LMS
London, Tilbury & Southend	L3a LMS
Londonderry	L3a LMS
Lynton & Barnstaple	L5b lbr
Manchester, Sheffield & Lincolnshire	L4b gcr
Maryport & Carlisle	L3a LMS
Mawddwy	Wales C3
Mersey	L3a LMS
Metropolitan	L1k met
Metro/Light Railway systems	D1 or C.
Midland	L3b mid
Midland & Great Northern	L1j mgn
Midland & South West Junction	L1j msja
Midland Counties	L3b mid
Mid Suffolk	L4a LNER
Neath & Brecon	Wales C3
Newcastle & Carlisle	L4b ner
North British	L4b nbr
North Devon & Cornwall Junction	L2a GWR & L5a SR
North Eastern	L4b ner
North London	L3a LMS
North Staffordshire	L3b nsr

Pentewan	L2a GWR
Plymouth & Dartmoor	L5a SR
Plynlimon & Hafan Tramway	Wales C3
Port Talbot	Wales C3
Ravenglass & Eskdale	C1w & Q1
Redruth & Chasewater	D3
Rhymney	Wales C3
Romney, Hythe & Dymchurch	D1a
Settle & Carlisle	L3a LMS
Shropshire & Montgomeryshire	D1a
Snailbeach	D3
Snowdon Mountain	Wales C3
Somerset & Dorset	L1j s&d
South Eastern & Chatham	L5b sec
Southern	L5a SR
Southwold	D1a
Stockton & Darlington	L4b sdn
Stour Valley	4b ger
Stratford-upon-Avon & Midland	L3a LMS
Surrey Ironstone	L1k & C1c
Swansea & Mumbles	Wales C3
Taff Vale	Wales C3
Talylyn	Wales C3
Vale of Rheidol	Wales C3
Wantage Tramway	L2a GWR
Welsh Highland	Wales C3
Welshpool & Llanfair Light	Wales C3
West London	L3a LMS
West Somerset Mineral	D3
Weston, Clevedon & Portishead Light	L2a GWR
Whitby & Pickering	L4b ner
Wirral	L3a LMS
Wotton Tramway	L4a LNER
Wrexham, Mold & Connah's Quay	L4b gcr

## INDEX TO SUBJECTS

Accidents	K3
Agriculture	K4
Air Services	G5b
Appreciation of Railways	Q
Architecture	E5
Art and Railways	N
Atlases and Gazetteers	T
Big Four amalgamation 1921-1939	B6
Biographies of engineers	E1
Boat Trains	G5a
Brakes	E14
British Railways 1949 to date	B10
Camping coaches	G7

Carriages	E12
Channel Islands	C7
Channel Tunnel	C8
Civil Engineering	E2
Clearing House system	F3
Cornwal	C1c
Crime/Railway police	K8
Devon	C1b
Diesels/ Diesel Electric Train	E10
Docks & Train Ferries	G5a
Electric Locos and Trains	E9
Electrification	E4
Fares, Tickets, Rates, Charges	F1
Ferries	G5a
First World War 1914-1919	B4
Freight Traffic	G2
Gazetteers	T
General Aspect of Railway History	A
General Works - Great Western	L2a
General works - London Midland & Scottish	L3a
General works -London & North Eastern	L4a
General works - Southern	L5a
Government Control	K6
Hampshire	C1g
Herald & Livery	M
Herefordshire and Worcestershire	C1n
Hotels & Catering	G7
History of specific steam locomotive classes	E8e
History of joint railways e.g., Metropolitan	L1j
History of Great Western Railway constituents	L2b
History of L.M.S. Railway constituents	L3b
History of L.N.E.R. constituents	L4b
Histories of Southern Railway constituents	L5a
Humour & Cartoons	P
Independent lines	L1k
Industrial Railways	D3
Industrial archaeology	R1
Industry & Trade	K4
Inter-Railway Relations	F2
Ireland	C4
Isles of Man	C6
Isle of Wight	C5
Lancashire	C1u
Law of Railways	K7
Light Railways and Tramways	D1
Literature of Railways	O
Locomotives	E17
Lynton and Barnstaple Railway	D2 l&b
Mechanical Engineering	E6
Memoirs of railway men	H1

Merseyside and Manchester	C1t
Military Railways	K7
Miniature Railways	D6
Miscellaneous railway equipment	E16
Miscellaneous works on British locomotives	E8f
Model Engineering	Q2
Motive power depots & Yards	E8j
Narrow Gauge	D2
National Defence	K10
Nationalisation 1948	B9
Network maps	C1q
Network maps of the Midland Railway	C1r
Norfolk and Suffolk	T1
Nottinghamshire and Derbyshire	T1 mid
Passengers, Social aspects	K2
Passenger Services	G3
Permanent Way	E3
Photography	Q3
Post Office, Philately	K9
Preserved Railway	Q1
Public Relations	G9
Railway Age 1830 – 1914	B3
Research	G8
Researching Railway history	R
Road Services	G4
Rolling Stock	E11
Scotland	C2
Second World War 1939-1945	B7
Signalling	E15
Social aspects of Railways	K1
Southern England	C1a
Somerset and Dorset	C1d
Special trains (inc. royal and funeral trains)	G3a
Staff Associations	H4
Staff Personal Safety	H5
Staff Training	H3
Staffordshire and Cheshire	C1p
Stations	E5
Statistics	S
Steam Locomotives	E8
Surrey and Kent	C1j
Sussex	C1i
Tickets	F1
Track plans	C1x
Tyne and Wear	T2
Underground Lines	D4
Unusual Forms of Railways	D5
Wagons, Goods Vehicles	E13
Wales	C3
Yorkshire	C1v

## GENERAL GUIDANCE

### **Enquiries**

Any enquires that would require some time to complete can be given to the staff member situated on the Railway Studies Collection desk. Please allow up to 21 days of a response to your enquiry.

### **Maps & Diagrams**

In the collection we have a range of maps and diagrams. They are located between the two doors leading to the staircase. You are welcome to ask for assistance looking and retrieving them.

### **Microfiche**

The Microfiche reader is located in our Railway Studies Collection room for public use. Please give 24hrs notice beforehand so we can check our records for your required film.

### **Photocopier**

The photocopier is located next to the microfiche in the Railway Studies Collection. This photocopier can scan and print up to A3 and you are welcome to scan any of our collection's books and documents.

Pricing for photocopying is as follows:

A4 Black & White	£0.10
A4 Colour	£0.50
A3 Black & White	£0.20
A3 Colour	£1.00

### **Quiet area**

Our Quiet Study Area is situated in our Railway Studies Collection.

You are welcome to bring resources from our main library and our Railway Studies Collection. Plug sockets are available for device charging.

### **The Stack**

The Stack is where we keep all our old and rare books. We are happy to retrieve items from our archives, but we ask that you call or e-mail ahead to make sure that they are available for you when you visit. Items in the Stack for example are:

Photos

Magazines

Working Timetables

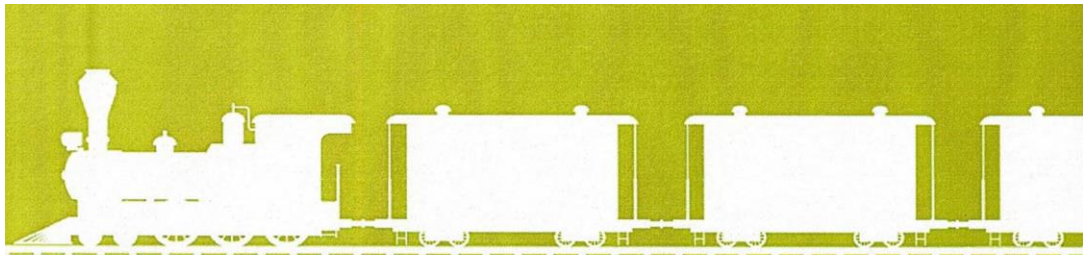
Old and rare books dating back over the last 200 years.

### **Wi-Fi**

Free public access Wi-Fi is available throughout the building.

Our Wi-Fi is listed as: Devon Libraries

This Wi-Fi does not require a password but will need a few details.

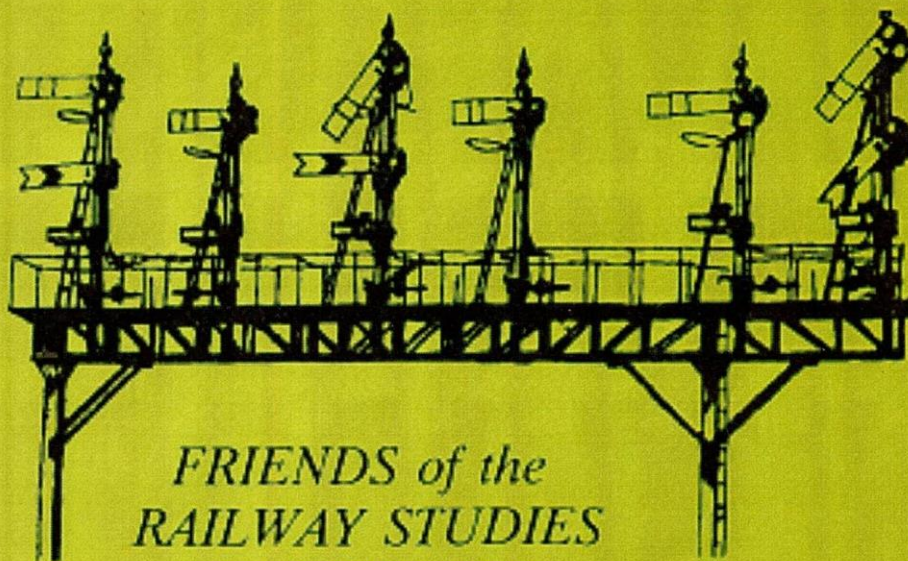


## The Friends

Established in 1992, the Friends support the Collection by fundraising, volunteering and giving specialist advice.

For more information:

[www.railwaystudies.org.uk](http://www.railwaystudies.org.uk)



*FRIENDS of the  
RAILWAY STUDIES  
COLLECTION*